

NVR

Quick Start Guide

Please read the Quick Start Guide carefully before using the product and keep it.

Related tools and documents of products, please download from www.herospeed.net.

1 Statement

- This manual is applicable for NVR C / CB / DB / D / DxxPoE / CxxPoE housings.
- This manual may contain some contents that are technically inaccurate or inconsistent with product functions and operations or wrongly printed. The contents of this manual will be updated according to the enhancement of products without prior notice. If the description of product in the manual does not match with the actual object, please prevail in kind.

2 Safety Instructions

- This equipment should be installed in well-ventilated environment. When installing, please keep proper space with the ground. It is good for machine heat dissipation that keeping proper space with the ground when install. Keep the equipment away from heat source and high temperature environment.
- The device should be installed horizontally, to avoid the installation in a strong vibration position.
- This device is not waterproof. To avoid fire or other hazards caused by short-circuit, shall prevent the device from getting wet.
- Please use the hard disk recommended by the manufacturer (generally recommend monitor level hard disk of Seagate and Western Digital) to meet the requirements of long time reading and writing of big data. Please buy from form channels to ensure the quality of hard disk.
- This product can not withstand heavy loads. Do not place heavy objects or multi-layer overlays on this product.
- NVR installation and construction must meet the specifications, may refer to the relevant national or local standards.

3 Hard Disk Installation

Reminder:

1. Please use the NVR dedicated SATA hard disk recommended by the device manufacturer. Make sure the power is off before installation.
2. The following pictures and installation diagrams for reference only, subject to the available products.

■ Hard disk installation guide

- (1) Unscrew the screws on the back and sides of the chassis and remove the cover.
- (2) Connect one end of the hard disk power cable and data cable to the motherboard and the other end to the hard disk.



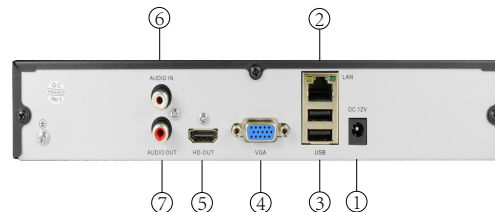
- (3) Align the hard disk screw holes to the chassis backplane, and then tighten lock the screws.
- (4) Install the cover and fix it by screws.



4 Rear Panel Interface Description

■ General NVR rear panel interface description

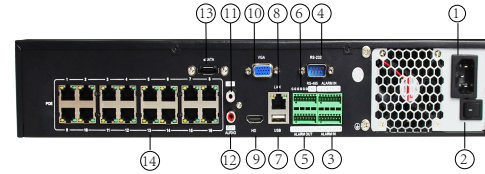
The rear panel interface , for reference only, please prevail in kind.



NO.	Interface	Description
1	POWER	Power input
2	LAN	Connect to Network
3	USB	Connect to USB devices
4	VGA	Connects to a VGA display device
5	HD-OUT	Connects to a HD-OUT display device
6	AUDIO IN	Connect to audio input devices
7	AUDIO OUT	Connect to audio output devices

■ POE NVR rear panel interface description

The rear panel interface , for reference only, please prevail in kind.



NO.	Interface	Description
1	POWER	Power input
2	SWITCH	Turn on or off the power
3	ALARM IN	Connect to alarm input devices
4	RS-232	Used for debugging and maintenance
5	ALARM OUT	Connect to alarm output devices
6	RS-485	Connects to RS485-compliant devices
7	USB	Connect to USB devices
8	LAN	Connect to Network
9	HD-OUT	Connects to a VGA display device
10	VGA	Connects to a HD-OUT display device
11	AUDIO IN	Connect to audio input devices
12	AUDIO OUT	Connect to audio output devices
13	eSATA	Connects to an external storage device
14	POE Ports	POE ports, connected to POE IPC

5 Local Basic Operation

■ Boot up

Make sure the input voltage matches the NVR consumption. Connect the device to the monitor and to the power adapter (if available). Plug in the power, switch on the power button (if available), then the device boot up.

NOTE:

1. It is recommended that you refer to international standards for power supply input with stable voltage values and low ripple interference.
2. Some devices do not have power button and will boot up directly when plug into an electric power supply.

■ Startup Wizard

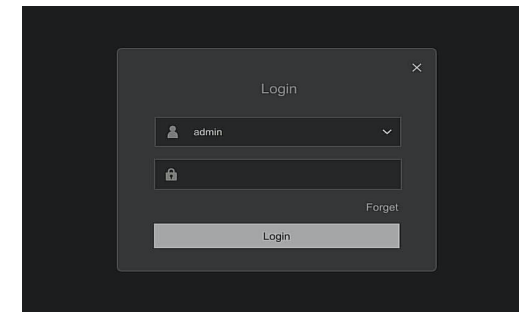
You can perform basic configuration on the device through the Boot Wizard.

Step 1: The device automatically enters the Boot Wizard page after it is powered on. Select the language, click "Apply", enter the system login interface, input the administrator password, click "Login".

Step 2: After logging in, configure the system time, click "Next", and follow the prompts to set other interface parameters.

NOTE:

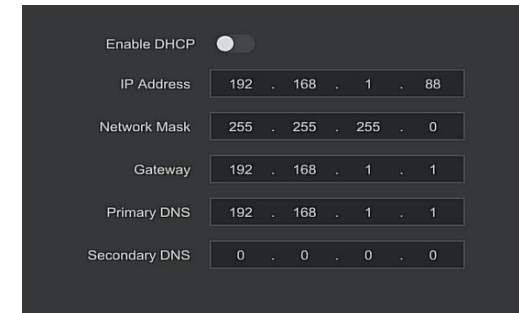
1. If you do not need to set the device, you can click "Cancel" to exit the boot wizard interface. You can also turn off the boot wizard in "Config> System Config> Common Config".
2. You should reset the device administrator password (the system default username is "admin" and the password is "12345") when booting for the first time. To ensure the security of the device, please save the admin login password and modify it regularly.



■ Network Settings

Network parameters must be properly configured before operating the device over the network.

Procedure: Follow the startup wizard to set up, or click "Config > Network Config > Basic Config". The system displays the IP/Port interface. Modify the IP address of the device according to the actual network plan. (The default IP address of the NVR & PoE NVR is 192.168.1.88.).

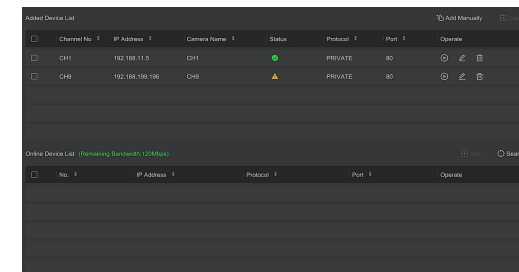


■ Add IP Device

Before accessing and configuring the IP channel, make sure that the NVR network connection is correct and valid.

Step 1: Follow the startup wizard to enter the channel config, or click "Config> Channel Manage> Channel Config" to enter the Add Camera interface.

Step 2: Add IPC by automatically or manually. Automatically add, click "Auto add" button (POE NVR don't support). Manually add a device, click "Search", the Device Search interface automatically searches for "Onvif" or "Private" protocol (if our company IPC protocol display "PRIVATE"), select the IP device to be added, and click "Add".



■ Recording Settings

NOTE:

The device opens all channels by default for 24 hours record.
Step 1: Config> Record Manage> Record Plan" to enter the Schedule interface.
Step 2: Select the channel and recording type according to the actual needs. Hold down the left mouse button and drag the mouse in the time period diagram or click " Edit" to set the recording schedule.



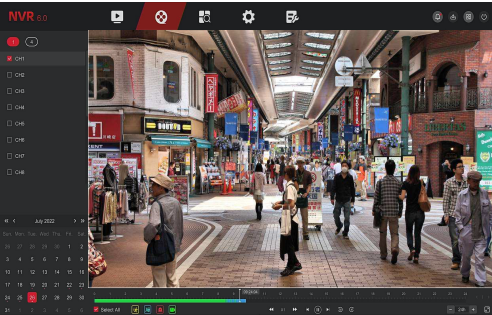
■ Playback

◇ Instant playback

Step 1: When the mouse clicks anywhere in the current channel screen, the control bar will automatically pop up below the channel.
Step2: Click "?" to enter the instant playback interface, can play the first 5 minutes of the current channel video.

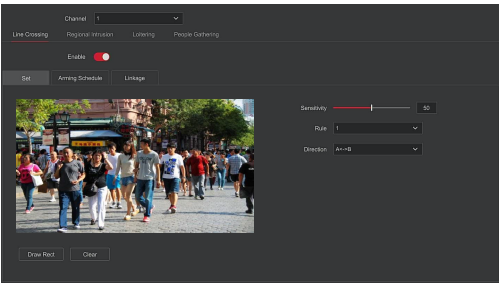
◇ Video playback

Step 1: Click " " or right-click on the preview interface and select "Playback" to enter the Playback interface.
Step 2: Choose "Channel > Date > Video type". Click " ", and the interface will start playing the file. Or select the "date > channel", left mouse click on the time progress bar below the playback interface to play the video.



■ Intelligent Detection

Step 1: Click "Config> Special Mode > Event Config > Smart Event" to enter the intelligent detection interface.



Step 2: Select the smart detection alarm mode for setting the channel. Intelligent detection alarms supported by the device include Humanoid Detection, Crossover Detection, Regional Intrusion Detection, People Stay Detection and People Gathering Detection. Each smart detection can be configured with different alarm rules.

NOTE:

- All smart detection modes can only be set if the IPC device supports it. That is, the channel number where the support device is located is available for configuration in the "Channel" position. Otherwise, the channel number is not displayed in the "Channel" position.
- The front-end device supporting smart detection can set up at most four out-of-bounds detection rules, four regional intrusion rules, four detection rules and four personnel aggregation rules.

◇ Line Crossing Detection

On the Line Crossing interface, select Channel > click "Enable" > click " Set "> click"Draw Rect"to draw a warning line in the video image > Set "Sensitivity" and "Direction"> click "Apply" > click "Arming Schedule"to Set the alarm time period > click "Linkage"to set the processing mode as needed > click "Apply" .

◇ Regional Intrusion Detection

On the Regional Intrusion interface, select Channel >click "Enable" > click " Set "> click"Draw Rect"to draw the alert area in the video image > Set "Sensitivity" and "Time Threshold"> click "Apply" > click "Arming Schedule"to Set the alarm time period > click "Linkage"to set the processing mode as needed > click "Apply" .

◇ Loitering Detection

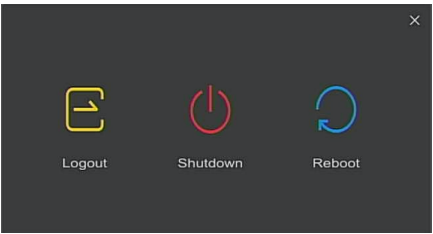
On the Loitering interface, select Channel >click "Enable" > click " Set "> click"Draw Rect"to draw the alert area in the video image > Set "Sensitivity" and "Time Threshold"> click "Apply" > click "Arming Schedule"to Set the alarm time period > click "Linkage"to set the processing mode as needed > click "Apply" .

◇ People Gathering Detection

On the People Gathering interface, select Channel >click "Enable" > click " Set "> click"Draw Rect"to draw the alert area in the video image > Set "Proportion" > click "Apply" > click "Arming Schedule"to Set the alarm time period > click "Linkage"to set the processing mode as needed > click "Apply" .

■ Shut down

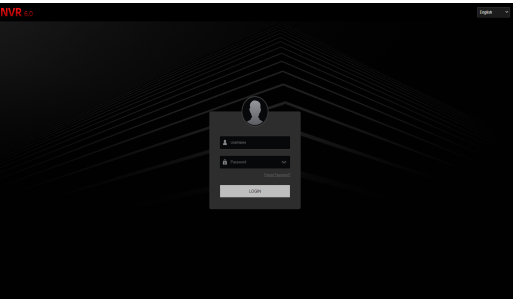
Choose "Power> Shutdown", click "Shutdown".



6 Web Operation

■ Login

NVR LAN login (the PC and the device are in the same router)
Step 1: Make sure the NVR and PC are in same network segment. If not, the network segment of PC need to be set up to the same segment with NVR, such as "192.168.1.99".
Step 2: Open IE browser, select Tools > Internet Options > Security > Custom Level > ActiveX controls and plug-ins, all options are enabled.
Step 3: Open "Search Tool", double-click the target device from the search result to enter the login interface, or open the IE browser to enter the NVR address: such as "http://192.168.1.88/"(If the http port of the NVR is changed to 89, enter "http:// 192.168.1.88:89/") to enter the login interface.
Step 4: Enter the device user name (default is "admin"), password (default is "12345"), and click "Login".



■ Preview

In the preview interface, click the play button at the bottom. For the first time connecting, you have to download and install the plugin before previewing.

NOTE:

The Web-side can also perform the operations such as system, network, storage, playback, download, upgrade, maintenance, and factory reset on the Web.

7 Mobile App Operation

Step 1: Download and Install

Use the Android or iOS phone to scan the corresponding QR code or search "BitVision" from the application store to download and install the BitVision App.



App QR

Step 2: Account login

Run BitVision App, in the sliding sidebar click " " enter the user center ,click "Please login", enter the account and password, and click "Login",or select other application account to authorize login and use (Note: no account is required to register first).

Step 3: Add device

After login, click "Device manage" , click " + " , select "SN Add", enter the device name ,user name, password and verification code after scan the QR code (the verification code printed on the label), choose device group ,click "Add device" to complete the addition.

Step 4: Live preview

Select "Real time" and " + " to enter the device list in the main interface, select the device channel to be previewed in the group, you will see the live video after click " Done " .

8 Disclaimer

The following exemptions or limitations of liability, please pay special attention to:

1. As a result of the following reasons, if the product interrupts or terminates the service for any of the following reasons, the company shall not be liable for personal injury or property damage to you or a third party. Failure to install or use properly as required; for the sake of national or public interest; force majeure; your own or third-party reasons (including but not limited to the use of third-party products, software or components, etc.
2. The company has not expressed or implied that this product is applicable to special purpose.This product may not be used in medical / safety equipment or other applications where there is a breakdown of the product that could result in life-threatening or personal injury, as well as hazardous or non-humanitarian hazards such as weapons of mass destruction, biological and chemical weapons, nuclear explosions or any unsafe use of nuclear energy use. Any loss or liability arising out of the above use will be at your own risk.
3. This product, when properly installed and used, can detect unauthorized intrusion during a particular delight but can not avoid accidents or personal injury or property damage. In your daily life, you should be vigilant and strengthen your safety awareness.
4. The Company is not responsible for any indirect, incidental, special punitive damages, claims, loss of property or loss of any data or documents. To the maximum extent permitted by law, the liability for compensation of company is not exceed than the amount you paid for this product.